
Town of Raymond
Community Service Master Plan



TABLE OF CONTENTS

- I. TERMS OF REFERENCE
 - A) OVERVIEW
 - B) OBJECTIVES
 - C) METHODOLOGY
 - D) COMMUNITY PARTICIPATION PROCESS
 - E) COMMUNITY DEMOGRAPHIC PROFILE
 - F) IMPLIMENTATION
 - G) REVIEW PROCESS
 - H) BUDGET

- II. GERNERAL SURVEY
 - A) INTRODUCTION & METHODOLOGY
 - B) SURVEY RESULTS

- III. FOCUS GROUPS
 - A) BACKGROUND & OBJECTIVES
 - B) METHODOLOGY
 - C) SUMMARY & CONSIDERATIONS
 - D) HIGHLIGHTS OF FINDINGS

- IV. CONCLUSION

- V. APPENDICIES
 - A) COPY OF GENERAL SURVEY
 - B) SURVEY RESULTS
 - C) POPULATION AND DEMOGRAPHIC STATISTICS

I. TERMS OF REFERENCE

A. Overview

The Town of Raymond is initiating the development of a Community Service Master Plan which will set the direction and provide framework for our Community Services Department in the future. Due to the Town of Raymond's continuing growth and increasing diversity, Council felt it was time to review its facilities and services with the vision of enriching the quality of life for Raymond residents. The Town of Raymond has never conducted a major needs assessment study for Community Services. The key outcome of the Master Plan is to offer residents opportunities that will meet their needs and interests, while fostering a cooperative approach to planning and development. The Town of Raymond is planning a collaborative approach to this project and is looking for the community's input as we develop and finalize the plan.

B. Objectives

The purpose of the Town of Raymond Parks and Recreation Master Plan is to gather information necessary to:

1. Identify and inventory all existing recreational programs currently available to the citizens of Raymond.
2. Assess and identify new recreation programs that the citizens desire and to recommend how they may become available.
3. Identify and inventory all recreational and facilities within the Town of Raymond.

4. Assess and identify significant and feasible improvements that should be made to the facilities.
5. Identify new recreational and facilities that the citizens desire and to make recommendations regarding their possible implementation.
6. Assess and identify the position of the community towards future development of new and existing parks and open spaces.
7. Identify and inventory all cultural facilities and programs that currently exist and make recommendations on how these opportunities can be maintained or enhanced.
8. Identify key Grant Programs that will maximise potential opportunities in the community.
9. To demonstrate to the citizens of Raymond, that the Town of Raymond is proactive and serious about improving recreation and cultural opportunities for it's citizens and that it intends to foster a collaborative and cooperative approach by involving all citizens and groups in charting and achieving a desirable future for the Town.

The end product will be regarded as a critical community resource document that will clearly articulate what, when and how future facilities and services will be constructed, implemented, financed and maintained. The Master Plan will be a road map to help guide Raymond Town Council and Administration as they address the future growth, development and priorities of the Town.

C. Methodology

The process to be undertaken for the development of the Master Plan will be as follows:

1. The Director of Community Services will prepare the Terms of Reference for the plan. The Terms of Reference will include the following areas:

overview, objectives, methodology, community participation process, context for planning, implementation, review process, budget, timelines and key steps.

2. The Town of Raymond Community Services Master Plan Terms of Reference will be presented to Raymond Town Council for its approval by the Director of Community Services.
3. A community profile will be developed and include the following reports: population breakdown by age and sex, projected population growth, projected school population growth, economic data.
4. An inventory of all public and private recreation and cultural facilities, parks and open spaces will be compiled. The Community Services Department will review the public facilities and provide any recommendations necessary.
5. An inventory of all programs and services currently offered to the citizens of Raymond will be compiled and analysed. The Community Services Department will provide any recommendations necessary.
6. Interviews will be held with community groups and agencies to determine issues, trends, needs and concerns.
7. Staff interviews (Parks and Recreation, Public Operations and Administration) to determine how services are delivered and resources managed.
8. A general survey will be developed and distributed within the Town of Raymond. The results will be compiled, analysed and recommendations will be documented by the Community Services Department.
9. Prepare draft plan and recommendations for Town Council approval prior Public Review.
10. Host public review process which will include two public forums, one for community organizations and one for the community at large. Copies will be made available for comment.

11. Review input derived from public forums and prepare final plan and recommendations.
12. Submit and present final plan for adoption as a basis for all decision making in the future.

D. Community Participation Process

1. Stakeholder Interviews

Letters of invitation to interview will be mailed, inviting stakeholders to arrange interviews with the Director of Community Services. Those unable to interview will be requested to fill out a questionnaire in order to obtain information.

- a. service clubs
- b. park users
- c. sport and recreation groups
- d. cultural groups
- e. groups representing disadvantaged and disabled

2. General Survey to Residents

A general survey will be developed and distributed to all residents of Raymond. The results will be compiled and a report developed by the Director of Community Services. In an effort to ensure response to the survey all residents returning completed survey will be entered into a draw for 2 Town of Raymond Swim Passes.

3. Focus Groups

Focus Groups will be conducted in an effort to further define what residents want. The Focus Groups will be advantageous in developing a full range of ideas, attitudes and opinions held by a selected sample of

respondents representing personal interests. They will allow for feedback and qualitative data not available from surveys alone.

E. Community Demographic Profile

1. Description of the Community
 - a. Geographic
 - b. Population Density
 - c. Population Growth
 - d. Income
 - e. Breakdown of Population by Sex and Age
 - f. Raymond School District Population by Sex and Age

2. Demographic Profile Resources
 - a. Raymond School Division
 - b. Statistics Canada
 - c. Alberta Municipal Affairs
 - d. Chinook Health Region
 - e. Oldman River Planning Commission
 - f. Town of Raymond

F. Implementation

Once the plan has been accepted and approved by Raymond Town Council it will become the basis for all planning and development pertaining to Community Services within the Town of Raymond.

G. Review Process

The Master Plan will be reviewed and updated by the Community Services Department on an annual basis. Every three years the Master Plan will undergo a major review in order to address changes in environment. The following criteria will be used in the review process to ensure the continued validity of the Master Plan.

- changes in the demographics of the local population,
- changes in the economic trends of the area,
- new trends in recreational and leisure priorities of the citizens,
- examining of special circumstances which would demand immediate attention.

H. Budget

The total budget requested for this project is \$12,104.00. This includes any cost associated with administrative wages, with the distribution of questionnaires and surveys, advertising in local publications, provision of refreshments for public meetings and supplies needed to complete project.

Administrative Wages	\$10,304.00
Distribution Costs	\$500.00
Promotion and Advertising	\$1000.00
Supplies	<u>\$300.00</u>
TOTAL	\$12,104.00

II. GENERAL SURVEY

A. INTRODUCTION AND METHODOLOGY

The 2005 General Survey is a component of the 2005 Community Services Master Plan which was initiated by Town Council in February 2005. The Town of Raymond Community Services Department was responsible for the coordination and design of the study and analysis of the resulting data. The goal of the survey is to determine participation patterns and overall satisfaction with facilities available to the Town of Raymond residents. The information gathered will be used to identify recreation, leisure, cultural trends and preferences, forecast future demands, and aid the recreation field in targeting and marketing services. This report provides descriptive data (frequencies and percentages) from the survey.

The survey consists of three sections. The first inquires about what activities residents participate in and where these activities happen. The second investigates what residents desire regarding new recreation and leisure facilities and how the Town should fund these new facilities. The final section requests residents to indicate their level of satisfaction with existing facilities and suggest any improvements that should be made to these facilities.

The survey was mailed to 1300 local post office boxes. The sampling unit was the individual household. The sampling technique provided a representative sample of Raymond households.

The data was collected between June 13, 2005 and June 30, 2005. The surveys were mailed out to the household on June 13, 2005. An advertisement in the Westwind Weekly paper was posted that week explaining the purpose of the survey. A reminder went in the paper on June 19 and the 26. Return boxes were posted at the Raymond Mercantile, Pharmacy, Town Pump, Fas Gas and the Town Office. June 30 was the final due date for surveys to be returned.

126 surveys were returned to the various return boxes throughout Raymond, this represents 9.6% of the sample.

Note on Reading the Data Tables

The data tables present the number of respondents and the associated percentage of the sample who answered each of the survey questions. For all tables, the percentages are calculated using the total sample of 126 as the base. In some cases, percentages have been rounded to one decimal and may not add exactly to 100.

The number of respondents is shown in the column heading by 'n'.

Several questions on the survey allowed residents to provide additional responses under the category of 'other' or 'improvements'. In the case of 'other', these responses are included in the tables while 'improvements' are listed following the tables.

B. SURVEY RESULTS

Please see appendices.

III. FOCUS GROUPS

A. BACKGROUND AND OBJECTIVES

In February of 2005 Council initiated the development of a Community Service Master Plan. The purpose of the Community Service Master Plan is to guide the Community Service Department in all future planning and development of new recreation facilities, sportfields, and parks. The Master Plan has three distinct components: planning, design and build.

Public Consultation is an important part of the planning component. It identifies the wants and needs of specific users and residents in general. In June of 2005 a general survey was distributed to all residents. The purpose of the survey was to determine participation patterns and overall satisfaction with facilities available to the Town of Raymond residents. The survey also asked participants to list improvements that they would like to see implemented in Raymond. Data from the survey produced four priorities that were presented to Town Council as recommendations for future development in Raymond. Town Council approved these four recommendations and support further investigation into the development of these facilities.

1. Multi-Purpose Leisure Centre	2. Parkland Development
3. Municipal Trail System	4. Sportfield Complex

In January and February thirty residents participated in three specific and distinct Focus Groups that provided feedback regarding their best liked areas, places in need of improvements, ideas and concerns to guide the planning process. The groups were challenged to be non-traditional and push the limits for the department in its perspective for future plans.

The purpose of the Focus Group is to gather additional qualitative information from specific user groups and individuals to be used in the planning for future improvements and/or development.

The objectives of the Focus Group are to gather information from the community and specific user groups detailing their needs and uses for new facilities and improvements to parks and open spaces. Information gathered will be used to define the space within the new parks and facility development(s).

B. METHODOLOGY

The Focus Groups were comprised of members of the community and surrounding area. Each participant represented a key demographic or was a member of a specific organization that regularly utilized a particular facility or park. Each focus group was hosted in Council

Chambers and started at 7:00pm. Each session was facilitated by Cam Mertz, Director of Community Services.

Participant List		
Mayor Dean Sallenback	Councillor Marlin Hogg	Councillor Danna Higa
Councillor Brian Dudley	Councillor Jim Steed	Steven Heggie
Laura Simpson	Cheryl Baker	Darlene Yawney
Darren Mazutinec	Carol Lazell	Freda Lowe
Cory Jarvis	Mike Holt	Trent Williams
Jody Powelson	George Bohne	Ruth Nalder
Mary Rose McMullin	Kerry Alred	Hugh Simpson

Results from the Focus Groups are the opinions of a small sample size and should be viewed with caution.

C. SUMMARY AND CONSIDERATIONS

Three Focus Groups were held with various members of the public and leisure stakeholders to discuss issues related to the improvement of recreation facilities and parks service. In general participants are pleased with the wide range of recreational facilities and parks in Raymond; however suggestions were received regarding the condition and functionality of some facilities and amenities within our parks.

Multi Purpose Leisure Centre, Monday, January 30, 2006

The focus of this session was on the pool, arena and surrounding area. In Council's term priorities, a new Leisure Centre is listed as their third most important priority and in the Master Plan General Survey; sixty three percent of all respondents indicated the development of a new leisure centre as the highest priority. The following are specific design features participants indicated to be priorities in improvements or new facility development.

Arena <ul style="list-style-type: none">▪ Regulation Size Ice Arena▪ Six Large Plumbed Dressing	Pool <ul style="list-style-type: none">▪ Six Lanes of Competitive Swim Area
-------------------------------------------------------------------------------------------------------------------------------	--------------------------------------------------------------------------------------------------

<ul style="list-style-type: none"> Rooms ▪ Netting Around Ice Surface ▪ Four Sheets of Curling Ice ▪ Bleacher Seating to Accommodate 1000 ▪ Artificial Turf for Off Season Activities 	<ul style="list-style-type: none"> ▪ Hot Tub ▪ Sauna ▪ Water Slide ▪ Large Dressing Rooms with Lockers ▪ Family Change Rooms
<p>Other</p> <ul style="list-style-type: none"> ▪ Classrooms ▪ Two Racquet Sport Court ▪ Rubberized Running Track ▪ Basketball Gym ▪ Dryland Training Room ▪ Concession ▪ Offices ▪ Storage Room 	<p>Considerations</p> <ul style="list-style-type: none"> ▪ Heated Viewing Area ▪ Wheelchair/Handicap Accessibility ▪ Elevator ▪ Solar Powered Energy ▪ Lots of Natural Lighting from Windows

Sportfield Complex, Tuesday, January 31, 2006

The focus of this session was on Sportfields. Participants were asked to comment on their current satisfaction with the condition of Town Sportfields suggest improvements. The following are specific design features participants indicated to be priorities in improvements or new facility development.

<p>Baseball</p> <ul style="list-style-type: none"> ▪ Quad Facility (Four Fields) ▪ Lighting for Fields ▪ PA System ▪ T-Ball ▪ Pitching Machine ▪ Batting Cage ▪ Warning Tracks ▪ Bleacher Seating ▪ Scoreboards 	<p>Soccer</p> <ul style="list-style-type: none"> ▪ Four Regulation Soccer Fields ▪ Regulation Soccer Nets ▪ Mini Soccer Nets ▪ Scoreboard (on feature field)
<p>Skateboard Park</p> <ul style="list-style-type: none"> ▪ Concrete Permanent ▪ ½ Pipe, Bowls, Bank Ramps ▪ Water Fountain ▪ Wind Screen ▪ Indoor Year Round ▪ 	<p>Tennis Courts</p> <ul style="list-style-type: none"> ▪ Suitable Surface ▪ Wind Fence ▪ Three Regulation Courts ▪ Water Fountain ▪ Bathrooms ▪ Ball Machine ▪ Rebound Board

<p>Facility</p> <ul style="list-style-type: none"> ▪ Bathrooms ▪ Four Dressing Rooms ▪ Concession and Cafeteria ▪ Kitchen ▪ Equipment Storage ▪ Water Fountains ▪ First Aid Room ▪ Umpire/Referee Room ▪ Maintenance Rooms 	<p>Multi Purpose Field</p> <ul style="list-style-type: none"> ▪ Artificial Turf ▪ Accommodate Soccer and Football
<p>Other</p> <ul style="list-style-type: none"> ▪ Advertising Opportunities ▪ Adequate Parking ▪ Walking Path Around Fields ▪ Water Fountains 	

**Parkland Development and Municipal Trail System, Wednesday,
February 1, 2006**

Participants in this session were asked to specify what improvements are needed in each of the Town's Parks and Open Spaces. Participants were also challenged to define the proposed improvements in an effort to provide specific qualitative information to the planning process. The following is information collected on each of the Towns Parks and Open Spaces.

<p>Green Strip Park</p> <ul style="list-style-type: none"> • Completely paved, with trail encompassing Town and linking all Parks together • Memorial Park with benches • Garbage cans • Disc (Frisbee) golf • Exercise stations • Natural with bushes and trees • Toddler area and playground • Benches all along trail and lighting (solar) • Flowers • Signage- history of town • Gazebos • Shade trees • Life trail 	<p>Centre Park (Swimming Pool)</p> <ul style="list-style-type: none"> • Toddler area • Lighting • Picnic area • Water fountain • Gazebo • More greenery • Toddler • Shade • Spray park • More benches • More picnic tables • Make this a Signature Park • Unlocked bathrooms, kept clean • Relocate tennis courts • Skateboard park
-----------------------------------------------------------------------------------------------------------------------------------------------------------------------------------------------------------------------------------------------------------------------------------------------------------------------------------------------------------------------------------------------------------------------------------------------------------------------------------------------------------------------------------------------------------	-----------------------------------------------------------------------------------------------------------------------------------------------------------------------------------------------------------------------------------------------------------------------------------------------------------------------------------------------------------------------------------------------------------------------------------------------------------------------------------------

- Access to bikes
- Pave it all
- Manicured lawn /turf- beautify
- Rest stops
- More trees
- Landscape

- Water features- fountain, trails, lawn sports
- Wheelchair accessible
- Camp kitchen
- Lighting
- B-ball courts

Perret Park and Campground

- Beautify Entrance
- Flowers
- Improve look of pump house
- Lights
- More camp kitchens
- Pave trail
- Put trail around lake
- Boat dock
- Sign at entrance
- Maintenance
- Fish for fishing
- More trees
- Water
- Trees
- Clean up
- Beach
- No more dumping
- Underground water system
- Showers
- Fertilize
- More picnic tables – not just at campsite
- Info signs- fish, etc- what's in lake, birds
- Access to golf course
- Benches
- Horseshoe pits
- Open in winter
- Electric motors allowed
- Paddle boats
- Bigger bathrooms
- Indian hills golf course

North Side Lions Park

- Toddler area with Foam Floor
- Swings
- Benches
- Fountain
- Picnic tables
- Shade trees
- Underground irrigation
- Camp kitchen
- Parking
- Grass
- Playgrounds for 6 and under
- Bathrooms
- Hills (creative landscaping)
- Paths with Lighting
- Bathroom
- Water Spray Park

<ul style="list-style-type: none"> • Easier access • Shade trees • Mowed and watered • Trail to golf course • Beach volleyball • Landscaping • Reunion centre building • Group camp area 	
<p>Ray Knight Memorial Park</p> <ul style="list-style-type: none"> • Water fountains • Cleaner bathrooms • Replace playground equipment- include toddler area • Wheelchair accessible • Historical information- statues, area for wagons and rides • Reunion Centre- (like Lee Creek) • Shows- in the park, like concerts • Washrooms • Playground • Camp kitchen • Flower/shrubs • Bandstand or Stage • Concessions • Wheelchair accessible • Lighting • Gazebo 	<p>South Side Lions Park</p> <ul style="list-style-type: none"> • Spray Ground • Eliminate- use \$\$ to enhance Victoria Park • Water Fountain • Senior's Park with tables for chess and checkers • Shade Trees • Horseshoes • Lighting • Lawn Bowling • Bathroom <ul style="list-style-type: none"> ▪ Replace or upgrade • Redundant- like the ZIP line • Needs Maintenance • Beautify • get rid of yappy dogs • New Gravel • Amenities
<p>Highway 52 Rest Stop</p> <ul style="list-style-type: none"> • Info Kiosk • Good flush clean toilets • 1 more camp kitchen • Water Fountain • Tent pads/ expand trailer area • Prune Trees • Camping spots • New bathrooms • More trees • Beautify • Playground 	

<ul style="list-style-type: none"> • Better dump location • Flower garden (where old sign used to be) • Horse Shoe Pits • Needs to be cleaned up • Hook ups for camping 	
----------------------------------------------------------------------------------------------------------------------------------------------------------------------------------------------------------------------------	--

D. HIGHLIGHTS OF FINDINGS

Raymond is a recreation community.

Raymond is at a critical juncture in its life cycle. The community has become more diversified in its demographics and is expanding. Financial capacity is nearly at its max and facilities are in need of improvements. Raymond is seeing changing needs in demand for indoor recreation facilities, many facilities such as the outdoor pool and sportfields are in need of replacing. If investment is not made in specific areas, Raymond could possibly see a decline in its appeal to new residents as housing turn-over occurs. The Town of Raymond has an opportunity to control its future by focusing attention on maintaining its existing facilities at the level accustomed to by its residents.

Create Connectivity throughout the Community

The Municipal Trail System should be extended by first linking existing trails and neighborhoods and then by developing new routes. Although the Town’s pathways are an excellent recreational resource for residents and tourists alike, more work is needed to develop a fully interconnected network, including the development of linkages between existing trails and neighborhoods, as well as expansion to new areas. Improving the pathway network emerged as a top priority through the public consultation program.

Utilize Space Effectively

Despite the Towns recent successes, the quality and quantity of many of Raymond’s recreation facilities are deficient and are not adequately meeting the needs of its current citizens, let alone future populations. The considerable shortage and poor condition of facilities can be attributed to a lack of new facility development, coupled with insufficient reinvestment in existing facilities. New facilities need to be developed that utilize space creatively and provide for multiuse activities for residents. Stand alone facilities are longer an effective way to offer recreational opportunities, new facility development should be located in a centralized location and when possible share infrastructure.

Unstructured Recreational Opportunities

The maintenance and enhancement of neighborhood parks, including playgrounds, is a high priority. There is a need for more unstructured recreational opportunities for persons of all ages. Specifically, there are known and significant deficiencies in the supply of new features such as spray/splash pads and skate parks and attractions for Seniors.

Create Tourism and Event Opportunities

As Raymond evolves the need to provide tourism opportunities to attract visitors to Raymond will become increasingly more important. Raymond has been built on strong traditions and exhibits a rich culture; residents believe these values should be communicated to visitors. Signage and information boards have been suggested by the public as creating opportunities. The need for a facility that accommodates Family Reunions and Special Events were identified as an important need within the community.

IV. CONCLUSION

The coming years will bring increased demand for recreation services for seniors as well as a greater urgency to increase physical and social activity among children and youth.

In order to enhance the quality of life of its residents, it is imperative that the Town correct the current deficiencies within its recreation system not only through capital investment, but also through the development of a delivery system that is forward-thinking and community-responsive.

The development of a comprehensive Action Plan is imperative to the success of the Community Services Master Plan. The Action Plan will be focused on the following 4 components identified in the CSMP.

1. Multi-Purpose Leisure Centre	2. Parkland Development
3. Municipal Trail System	4. Sportfield Complex

If you have any questions regarding the information contained in this report or any of the proceedings in the Focus Groups, please contact Community Services at 752-3322.

V. APPENDICES

B. SURVEY RESULTS

1. PARTICIPATION

Q1a. What leisure activities do you currently participate in?

LEISURE ORIENTED		
Activity	Number of Responses	Percentage
Reading For Pleasure	112	11.6
Watching TV	95	9.8
Gardening	92	9.5
Family Activities	89	9.2
Computers	80	8.2
Camping	66	6.8
Playground-Visit/Play	57	5.9
Musical Instrument	47	4.8
Arts and Crafts	44	4.5
Photography	40	4.1
Wildlife Watching	38	3.9
Dog Walking	38	3.9
Bird Watching	38	3.9
Picnicking	30	3.1
Cooking	27	2.7
Further Education Classes	23	2.3
Dancing	19	1.9
Drama	16	1.6
Movies	3	0.3
Yoga	2	0.2
Sewing	2	0.2
Recycling	2	0.2
Stamp Collecting	1	0.1
Landscaping	1	0.1
Genealogy	1	0.1
Carving	1	0.1

Q1b. What recreational activities do you currently participate in?

RECREATION ORIENTED		
Activity	Number of Responses	Percentage
Walking	100	14.9
Swimming	74	10.9
Bicycling-pleasure	66	9.7
Hiking/Backpacking	56	8.3
Exercise/Aerobics	55	8.1

Fishing	43	6.4
Golf	38	5.6
Jogging	28	4.1
Basketball	24	3.5
In-Line Skating	24	3.5
Bicycling-commute	18	2.7
Tennis	16	2.4
Canoe/Kayak	15	2.2
Skiing	15	2.2
Hockey	15	2.2
Football	13	1.9
Skateboarding	11	1.6
Hunting	11	1.6
River Rafting	10	1.4
Volleyball	9	1.3
Yoga	6	.8
Martial Arts	5	.7
Soccer	5	.7
Ice Skating	3	.4
Curling	3	.4
Gymnastics	2	.2
Ultimate Frisbee	2	.2
Softball	2	.2
Waterskiing/Wakeboarding	1	.1
Boating/Sailing	1	.1
Scuba Diving	1	.1
Archery	1	.1
Bowling	1	.1
Baseball	1	.1
Frisbee Golf	1	.1
Badminton	1	.1

Q1c. What cultural activities do you currently participate in?

CULTURE ORIENTED		
Activity	Number of Responses	Percentage
Theatre	84	24.7
Fairs and Festivals	71	20.9
Special Events	69	20.4
Concerts	65	19.2
Museum	48	14.1
School Events	2	.5

Q1d. Where do you participate in these activities?

Location	Number of Responses	Percentage
Raymond	117	36.1
Lethbridge	98	30.2
Cardston	45	13.8

Magrath	21	6.4
Stirling	11	3.3
Coaldale	8	2.4
Waterton	7	2.1
Calgary	5	1.5
Edmonton	5	1.5
Taber	2	.6
Hillspring	2	.6
Crowsnest Pass	1	.3
Welling	1	.3
St. Mary Reservoir	1	.3

Q1e. What leisure, recreation and cultural facility do you currently use for your activities?

Facility	Number of Responses	Percentage
Parks	92	12.3
Library	92	12.3
Pool	87	11.5
Theatre	72	9.9
Playgrounds	66	8.7
Pathways	61	8.1
Arena	50	6.7
Golf Course	44	5.9
Soccer	41	5.5
Museum	38	5.1
Stampede Grounds	36	4.8
Baseball	26	3.5
Tennis Court	21	2.8
Outdoor Basketball Courts	11	1.5
Temple Hill Motorcycle Park	7	.9
Senior Centre	2	.2
Ag Buildings	1	.1
Ridge Park	1	.1
Perrett Park	1	.1
Church Gym	1	.1
Raymond Family Hub	1	.1

2. NEW FACILITY DEVELOPMENT

Q2a. What new facilities would you most like to see developed in Raymond?

Facility	Number of Responses	Percentage
Multipurpose Recreation	67	37.6

Centre		
Skatepark	13	7.3
Trail System	12	6.7
Outdoor Swimming Pool	12	6.7
Ice Arena Renovation	10	5.6
Toddler Playground	7	3.9
Curling	7	3.9
Movie Theatre	6	3.3
Playgrounds	5	2.8
Indoor Riding Arena	4	2.2
Multipurpose Rooms	4	2.2
Golf Course	3	1.6
Disc Golf Park	3	1.6
Indoor Racquet Sports	3	1.6
Bowling Alleys	3	1.6
Factory Lake Development	2	1.1
Perrett Park Development	2	1.1
Tennis Courts	2	1.1
Indoor Soccer	2	1.1
Lacrosse	2	1.1
Gymnastics	1	.5
Outdoor Stage	1	.5
Nature Reserve	1	.5
Computer Lab	1	.5
Indoor Track	1	.5
Water Spray Park	1	.5
Soccer Fields	1	.5
Indoor Archery	1	.5

Q2b. How should the Town fund these new facilities?

Funding Source	Responses	Percentage
Grants	100	31.8
Fundraisers	65	20.7
User Fees	60	19.1
Corporate Sponsorship	54	17.2
Taxes	35	11.1

Q2c. Currently only users of the pool and arena are charged a user fee. Do you feel that all recreation, leisure and cultural facilities should be charged a user fee?

Preference	Responses	Percentage
Yes	58	51
No	57	49

3. SATISFACTION LEVELS

Q3a. Please rank your overall satisfaction with the following facilities.

FACILITY	Not Satisfied		Satisfied				Very Satisfied			
	n	%	n	%	n	%	n	%		
Pool	44	35	27	21	31	24	11	8	4	3

Comments:

- cleaner (3)
- nicer lockers
- small covered pool
- nicer restrooms
- new indoor pool (20)
- upgraded (2)
- open pool earlier
- warmer kids pool
- adult swim lessons
- keep wading pool full and free of paint chips
- grass area and tables in fenced area (2)
- too small for a growing town, too expensive to maintain due to its age
- more bathrooms in the changing area
- repair pool walls
- indoor pool combined with arena
- new pool, not indoor pool
- not open long enough
- high satisfaction when its open
- add a slide
- new dressing rooms
- garbage and broken glass around pool area
- warmer water
- more adult sessions
- larger dressing rooms
- covered area for spectators
- pool covers
- lockers that lock
- lifeguards more preferences
- cleaner change rooms

- open on Sunday
- longer season
- competitive swimming opportunities
- utilize care facility
- should be open Sunday also
- kiddie pool needs to be heated and on one level
- bigger
- ice arena should be joined under one roof
- indoor pool, heated kids pool
- open pool in June
- deeper end in kids pool
- heat pools
- handicapped accessible (2)
- covered pool
- lessons in winter
- user fees
- too cold
- roof over seating area

FACILITY	Not Satisfied		Satisfied				Very Satisfied			
	n	%	n	%	n	%	n	%		
Arena	22	17	21	16	36	28	20	15	4	3

Comments:

- used year round
- upgrade- new facility
- paint and keep it clean
- make it more multiuse
- no heat for spectators
- new arena
- heaters
- better scheduling for open skates
- don't know don't use
- clean the washrooms
- open on Sunday
- heat for spectators that work
- public relations ability for staff
- need renovations
- concessions need to be downstairs
- bleachers improved
- bathrooms improved
- open on Sundays
- update facility
- knowledgeable staff

- not enough interest to rebuild- need to share with Magrath
- better monitoring of activities- kids skating in the wrong direction
- bathrooms need attention
- tear it down
- new frontage, dressing rooms, etc- maybe tied into swimming pool
- turn this into an indoor soccer field
- new one, perhaps in combinations with an indoor swimming pool
- new paint and signage out front
- more lights
- heat in stands
- new signs out front
- new front foyer
- accessible concession
- need an arena
- open more hours
- cleaner rooms- bathrooms not maintained
- leaky roof
- the building is old and needs to be repaired
- staff needs to like kids, make them feel welcome and not waiting to kick them out
- make available for indoor soccer in the winter
- use 7 days a week
- more variety of activities
- benefits too few for money it costs
- new arena with better energy efficiency
- make into indoor soccer fields
- roof/ceiling all getting old, paint and repair

FACILITY	Not Satisfied		Satisfied				Very Satisfied			
	n	%	n	%	n	%	n	%		
Soccer Fields	7	5	8	6	41	32	26	20	8	6

Comments:

- better lines and bathrooms
- lines marked more clearly on field
- bleachers for all fields
- more fields
- groomed more often and better playground
- restrooms
- small seating for north fields
- fill in holes
- bleachers
- fill holes

- mini soccer nets (4)
- new nets (5)
- they are better than in the past
- lines painted, not roundup
- looks fine. Kids like soccer
- bathrooms more accessible
- bleachers fixed and painted
- better kept
- nicer field for older teams
- bathrooms open so kids can use them
- have goalposts and nets available for soccer season
- painted lines
- make indoor soccer fields

FACILITY	Not Satisfied		Satisfied				Very Satisfied			
	n	%	n	%	n	%	n	%		
Baseball Fields	1	.7	7	5	36	28	25	20	19	15

Comments:

- need garbage cans
- stop vandalism
- no more gopher holes
- washrooms need to be better maintained
- fill holes
- fix bleachers
- rake and clean better
- fix fences
- Maintain bathrooms
- Install water fountain
- Bathrooms, bleachers need to be fixed
- Water fountain by fields
- Improve grounds
- Upkeep and upgrade
- Grass cut
- Clean dugouts
- New shale to diamonds
- Batting cage rundown
- More attentions to maintenance and care

FACILITY	Not Satisfied		Satisfied				Very Satisfied			
	n	%	n	%	n	%	n	%		
Tennis Court	14	11	17	13	37	29	11	8	5	3

Comments:

- Keep in good working order
- We miss the practice board
- Nets are great
- Cracks getting bad- needs new surface
- Maintain better
- Some improvements
- Encourage schools to teach and use
- New courts
- New surface
- Needs to be updated
- Keep clean
- Good nets
- Rough shape, nets on ground at times
- Turn into street hockey court
- Needs resurfacing
- Publicize
- Needs to be fixed, maintained, fill in the cracks
- Do not neglect these
- Need resurfacing
- Lighting
- More upkeep

FACILITY	Not Satisfied		Satisfied				Very Satisfied			
	n	%	n	%	n	%	n	%		
Campgrounds	4	.3	22	17	45	35	18	14	11	8

Comments:

- Replace dead and diseased trees
- Increase watering and lawn care
- More trees
- Have a couple stay there as campground host to ensure no vandalism
- Perrett lake dangerous for children
- Trees, sandy beach and corner lake
- Keep mowed and clean
- Frequent garbage pickup
- Spray mosquitoes
- Plant more trees
- Provide firewood
- Check chimney
- Building with flush toilets that can be locked during the winter
- Deciduous trees for shade
- More fire pits

- Docks at parrot park
- Boat dock
- Winter access
- Monitoring of substance abuse, liquor, quads- banned and enforced
- Messy, not maintained well
- More trees
- Shut down 52,
- Oil roads at Perrett
- Add trees
- More trees for shade
- More trees, water them daily
- Trees badly needed to increase privacy and beauty
- Better signs to Perrett park
- More trees
- Underground sprinklers
- Beach area
- Dock area
- Better caretaking
- Better signage to get there
- more trees
- coin operated hot showers

FACILITY	Not Satisfied		Satisfied				Very Satisfied			
	n	%	n	%	n	%	n	%		
Parks	10	17	10	17	41	33	31	25	8	6

Comments:

- promote community activities throughout southern Alberta
- need more care, landscaping, watering
- need benches
- all older parks upgraded
- large park to fly kites, model planes
- trees for shade
- weeds need to be controlled
- need picnic tables
- expand and advertise better
- firewood would be nice
- need more attention
- use the school park
- maintain better
- interconnecting walking/cycling paths
- picnic tables
- trees for shade

- expand
- need shade trees
- keep them safe for children and families
- need trees
- need paths
- Garbage pickup more frequently
- Repairs made as soon as possible after vandalism
- Maintain better
- Regular gravel replacement
- Parks that are more appropriate for small children, strollers, bathrooms, etc.
- More pathways

FACILITY	Not Satisfied		Satisfied				Very Satisfied			
	n	%	n	%	n	%	n	%		
Playgrounds	6	5	8	6	45	36	34	29	15	3

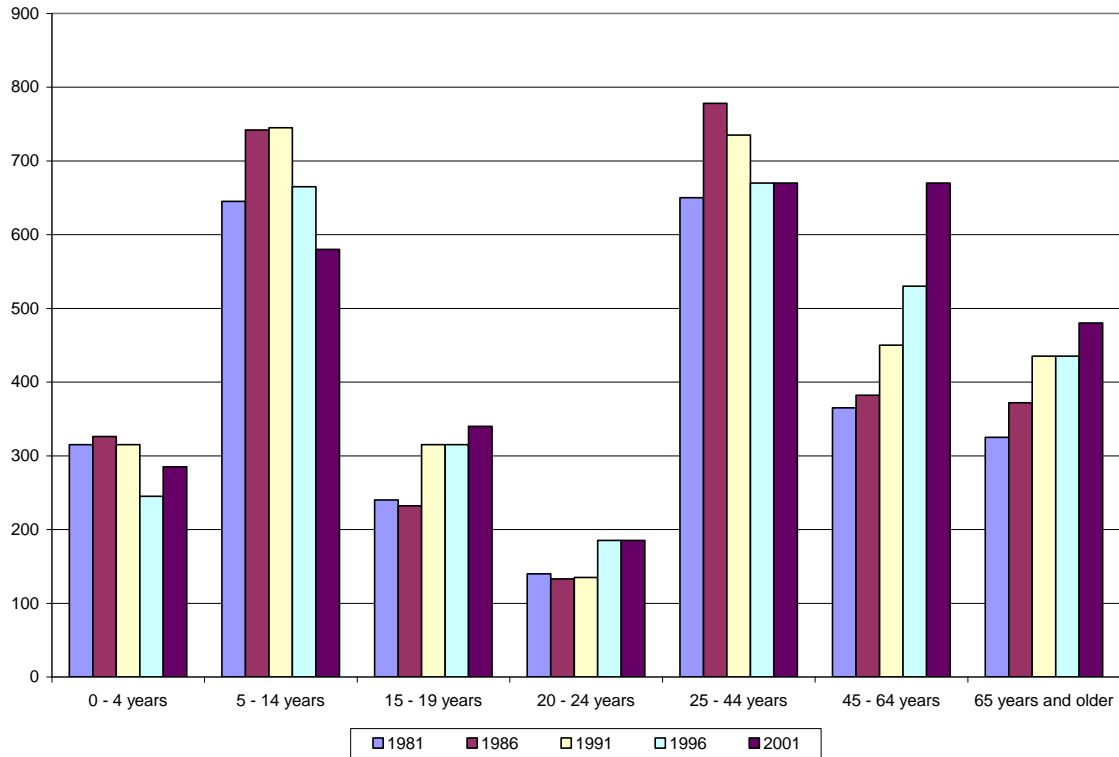
Comments:

- Need swings
- Toddler appropriate
- Check garbage's
- Eliminate the wood playgrounds
- More seating for elders
- Greater depth of pea gravel
- Playgrounds for children 18 months – 3 years
- Check and maintain more frequently
- A great big playground
- Make sure garbage's emptied
- Trees for shade
- More swings
- Garbage bags used
- A closed garbage container
- More trees
- Baby swings
- Benches
- Skateboard equipment for older kids
- More attention
- Need to be fenced properly
- Kept clean and mowed
- Facilities for children in wheelchairs
- Toddler playgrounds
- Baby toddler swing
- Equipment for children under 5

Q3b. How should these improvements be made to facilities be funded?

Funding Source	Responses	Percentage
Grants	98	28.6
Fundraisers	69	20.2
Corporate Sponsorship	66	19.3
User Fees	61	17.8
Taxes	48	14

C. POPULATION AND DEMOGRAPHIC STATISTICS



Town of Raymond 1901 to 2001

